

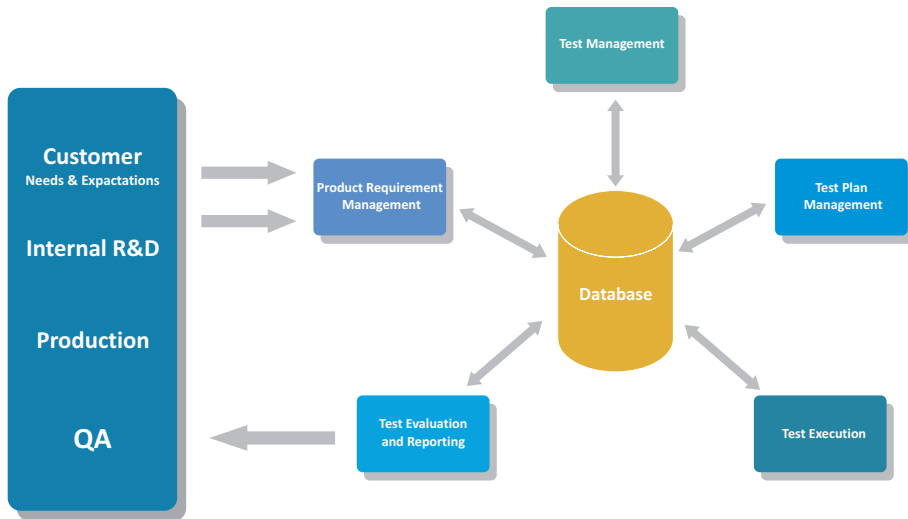


Black Box Testing

RT-INTENT

KEY FEATURES AND BENEFITS

Full Test Management and automatic test execution system



Modular Solution

INTENT-RM

Handling of product requirements, creation, modification, maintenance.

INTENT-TM

Test definition, test cases creation, modification, maintenance, connection to requirements.

INTENT-TPM

Test plan creation, test execution, test plans handling, test system configuration.

INTENT-TE

Test evaluation and reporting of test results.

RT-EXECUTOR

Test cases and test suites execution tool.

RT-DB

Stores test results into database.

Integrated Test Environment

RT-INTENT is Test Management and Test Execution Software intended to track the Quality Assurance through the project lifetime.

RT-INTENT provides access to Test Management modules (INTENT-RM, INTENT-TM, INTENT-TPM and INTENT-TE).

RT-INTENT provides cross-comparison of requirements vs. test plan coverage.

RT-INTENT is scalable from single site, single project to multiple sites-projects, increasing testing efficiency through test-plan, test-cases reusability.

RT-INTENT has powerful reporting tool with predefined set of KPI for the project.

Web-based Test Management solution

System Modularity

- Each module can be used as a separated application
- Modules can be loaded from a single framework
- Modularly designed system with clearly defined layers (Presentation layer and Core layer)
- Supports different types of test interpreters

Covers all phases in project lifetime

Additional features

- Bug tracking system support - automatic update of detected defect issues
- System changes mail notification mechanism
- Workflow tracking mechanism

Modules

INTENT-RM* Product Requirement Management

- This module is responsible for creating and maintenance of general product requirement specification, requirement template mechanism and requirement compare mechanism.
- Requirements describe in detail what needs to be tested and provide the test team with the foundation on which the entire testing process is based.

INTENT-TM* Test case Management

- INTENT-TM covers operations which are connected to test case creation, modification test suit handling and mechanism for managing connection with product requirement.
- Using Test Management module user is able to define test script (test steps) and store created scripts to central database.

INTENT-TPM* Test System Configuration and Test Plan Management

- Test system configuration module provides environment for defining devices and modules which will be included to test system (device under test, generators, grabbers, control devices, algorithms, etc).
- In this module user prepares test bed and defines devices included in test process and interfaces for communication between executor and selected devices.
- Presented system will also handle creation and modification of master and execution test plans.

INTENT-TE* Test Evaluation and Reporting Module

- Evaluator module is responsible for test cases execution, results evaluation, defects and errors handling and back connection to requirement.
- Various types of already available reports/KPI's
- Possibilities to generate custom reports/KPI's

RT-EXECUTOR Test Executor

- This module is probably the most important part of the system. It provides possibilities of manual and automatic test cases or test suites execution functionality.
- Executor module controls equipment necessary for test execution process, controls test execution scheduling and handles test results.

RT-DB DataBase Module

- Stores test results into database

*web-based modules

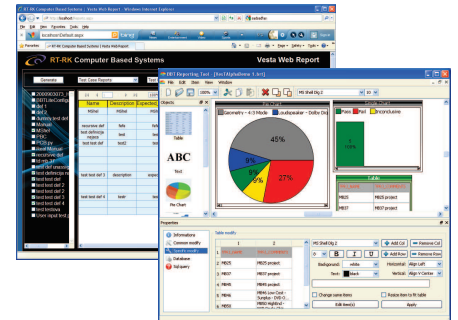
RT-INTENT

TEST MANAGEMENT MODULES

Features

- Four out of six management modules are web-based applications which can be used without additional installation
- Modules can be included inside a single framework
- Modular solution - clear separation of presentation (GUI) and Core layer.
- Core layer is divided to Business Logic and Data Access layer
- Supports different types of interpreter: Test cases can be written in Python or solution proprietary language
- Manual, semi-automatic and automatic test execution
- Connection with bug tracking system
- Support of user management, user responsibility and workflow tracking mechanism
- Mail notification mechanism
- Excel export mechanism
- Stand-alone and web-based Report/Evaluator tool with various types of reports
- Report template generator - custom report generator tool

INTENT-EVALUATOR screenshot



Package

RT-INTENT installation and deployment are made to meet customer's specific requirements and tailored according to existing QA processes and company organization.